

JULY



P. 4

Kitchen · Modern Classic

A Softer Order For Daily Rituals



P. 8

Living Room · Japandi

Quiet Grain Soft Horizon



P. 12

Bathroom · Mediterranean

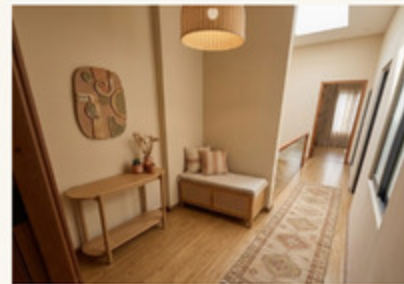
Salt Air, Soft Stone



P. 16

Nursery · Scandinavian

Soft Order for Small Beginnings



P. 20

Entryway · Boho

Sunlit Passage Softly Untangled



P. 24

Patio · Biophilic

Where Shade Becomes Shelter Where Green Becomes Room



P. 28

Terrace · Modern Tropical

Shade, Leaflight and Slow Air

ROOMZINE

JULY · 2026 · YOUR INTERIOR, REIMAGINED

INTERIOR REDESIGN

Home as it could be

- ◆ Kitchen: Modern Classic
- ◆ Living Room: Japandi
- ◆ Bathroom: Mediterranean
- ◆ Nursery: Scandinavian
- ◆ Entryway: Boho



KITCHEN · MODERN CLASSIC

A Softer Order For Daily Rituals

Elegance begins where noise recedes.

MODERN CLASSIC

SCANDINAVIAN



BEFORE



KITCHEN · MODERN CLASSIC

A Softer Order For Daily Rituals

MODERN CLASSIC

SCANDINAVIAN

TRANSFORMATION · KITCHEN

A Softer Order For Daily Rituals

A strong shell made the proposal easy: warm flooring, a generous ceiling line, and practical built-ins already gave the room structure. The redesign simply refined what was there, trading playful surfaces for a calmer Modern Classic language. Walls

were softened, the dining set became more graceful, and lighting introduced a sense of ceremony without excess. The result resolves the open kitchen and stair landing into one composed, livable scene.

DETAILS THAT MATTER

Three visible anchors, reimagined with quieter poise in a Modern Classic scheme.



01 Framed Minimalism
A slim gold frame turns the blank painting into quiet punctuation.



02 Linen Dining Chairs
Wood-framed chairs soften the breakfast nook with tailored linen seats.



03 Brass Pendant
A milky glass pendant softens the ceiling line with vintage grace.

“Elegance begins where noise recedes.”

WHAT CHANGED

- 01 Walls in warm ivory
- 02 Dining set replaced
- 03 Textiles in natural linen
- 04 Lighting with brass accents
- 05 Decor edited and minimal
- 06 Palette softened throughout



SECOND SCENARIO



Scandinavian—lightness with a domestic hush

Ash wood, chalky whites, and simple textiles would make the room feel brighter and more informal.

— curated in 40 seconds from a single photo.

CHOOSE A STYLE

- MODERN CLASSIC
- SCANDINAVIAN
- MINIMALIST
- INDUSTRIAL
- CONTEMPORARY

THE FULL HOME ISSUE

roomzine.com



RENOVATION BUDGET

Refined Classical Kitchen Layers

KITCHEN · MODERN CLASSIC

FURNITURE

- ① Round pedestal table
West Elm / Wayfair **\$800–\$1,800**
- ② Upholstered dining chair
Wayfair / West Elm **\$180–\$450**

LIGHTING

- ⑤ Glass dome pendant
West Elm / IKEA **\$150–\$450**
- Pleated table lamp
Target / West Elm **\$70–\$220**

TEXTILES

- ③ Linen cafe curtain
Amazon / Target **\$35–\$120**
- ④ Bordered area rug
Wayfair / West Elm **\$180–\$600**

DECOR

- Ceramic fruit bowl
Target / West Elm **\$30–\$110**
- Marble candle holders
Amazon / West Elm **\$35–\$140**

TOTAL

\$1,480–\$3,890

SHOPPING LIST · KITCHEN · MODERN CLASSIC

Refined Classical Kitchen Layers

Tagged in the photo, listed at right — what to buy and where.



Balanced mid-range selections create a polished modern-classic kitchen with soft textiles, graceful lighting, and timeless tabletop accents.



LIVING ROOM · JAPANDI

Quiet Grain Soft Horizon

Calm is not emptiness— it is rhythm without strain.

JAPANDI

MODERN TROPICAL

© 2026 ROOMZINE. ALL RIGHTS RESERVED.



BEFORE

ROOM 02 / 07

LIVING ROOM · JAPANDI

Quiet Grain Soft Horizon

JAPANDI MODERN TROPICAL

TRANSFORMATION · LIVING ROOM

Quiet Grain Soft Horizon

Strong bones were already here — warm flooring, generous volume, and a built-in media wall with presence. The proposal softened the room’s visual noise through lime-washed walls, lower silhouettes, and a steadier rhythm of oak, linen, and matte

black. A deeper rug zone, lighter drapery, and sculptural lighting resolve the scale, while edited decor lets the architecture and staircase breathe with a calmer, more grounded ease.

DETAILS THAT MATTER

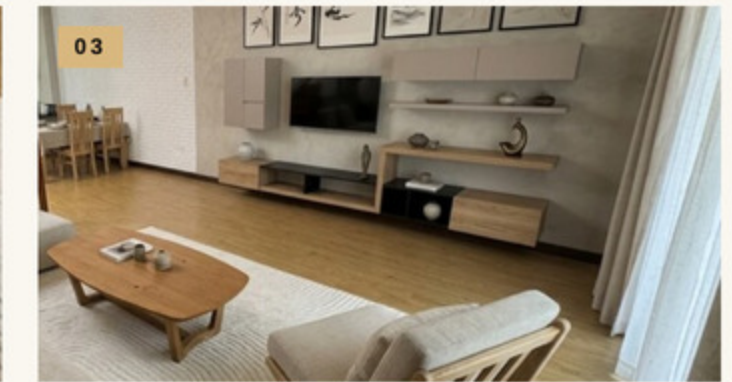
Three visible anchors, reimagined in a quieter Japandi language.



01 Soft-Linen Sofa
The low linen sofa softens the room with calm, inviting volume.



02 Low Wood Table
A softly rounded coffee table anchors the woven rug.



03 Sheer Curtains
Sheer curtains soften the daylight at the room’s edge.

“ *Calm is not emptiness—
it is rhythm without strain.* ”

WHAT CHANGED

- 01 Walls in warm greige
- 02 Sofa in taupe linen
- 03 Rug in natural weave
- 04 Lighting with sculptural forms
- 05 Decor edited and minimal
- 06 Textiles in soft neutrals



SECOND SCENARIO



Modern Tropical—Shade, Breeze, Pattern

Cleaner lines meet leafy texture, cane details, and sun-washed greens for a lighter, more relaxed energy.

— curated in 40 seconds from a single photo.

CHOOSE A STYLE

MINIMALIST JAPANDI MODERN TROPICAL SCANDINAVIAN CONTEMPORARY

THE FULL HOME ISSUE

roomzine.com



RENOVATION BUDGET

Quiet Warmth, Crafted Simplicity

LIVING ROOM · JAPANDI

FURNITURE

- ① Linen lounge chair \$499-\$999
West Elm / Wayfair
- ② Round oak side table \$129-\$299
West Elm / Target

LIGHTING

- ⑤ Rice paper floor lamp \$89-\$249
IKEA / Target
- Black cone pendant \$79-\$229
Wayfair / West Elm

TEXTILES

- ③ Textured wool rug \$299-\$799
West Elm / Wayfair
- ④ Stone linen cushions \$40-\$120
IKEA / Amazon

DECOR

- Ceramic branch vase \$35-\$110
Target / West Elm
- ⑥ Minimal ink artwork \$80-\$280
Wayfair / West Elm

TOTAL

\$1,250-\$3,085

SHOPPING LIST · LIVING ROOM · JAPANDI

Quiet Warmth, Crafted Simplicity

Tagged in the photo, listed at right — what to buy and where.



This mid-range Japandi living room mix leans on natural textures, soft neutrals, and clean silhouettes from recognizable US retailers.



BATHROOM · MEDITERRANEAN

Salt Air, Soft Stone

Warmth is often a matter of what the eye can finally rest on.

MEDITERRANEAN

SCANDINAVIAN

YOUR INTERIOR, REIMAGINED



BEFORE



ROOM 03 / 07

BATHROOM · MEDITERRANEAN

Salt Air, Soft Stone

MEDITERRANEAN

SCANDINAVIAN

TRANSFORMATION · BATHROOM

Salt Air, Soft Stone

Good bones were already in place: generous stone-look surfaces, a clear glass shower screen, and practical built-ins that keep the footprint efficient. The proposal leaned Mediterranean not through excess, but through warmth—limewashed

walls above the tile line, lighter freestanding pieces, woven texture, and softer lighting. By editing the visual noise and introducing sun-baked tones, the room resolves into something calmer, more tactile, and quietly transportive while respecting the existing shell.

DETAILS THAT MATTER

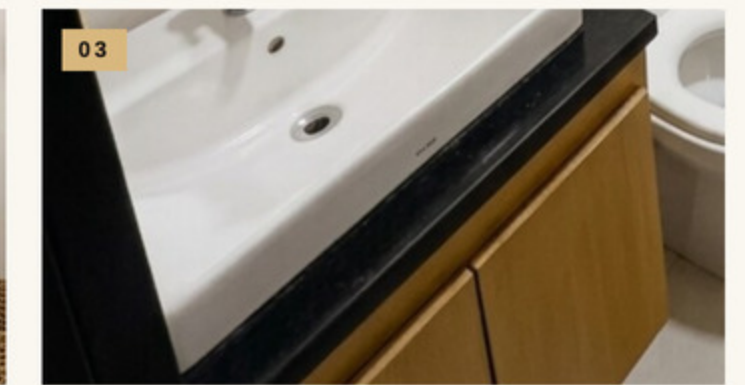
Three visible anchors, reimagined in a Mediterranean mood.



01 Simple Mirror
A plain wall mirror reflects the room's hooks and quiet light.



02 Glass Shower Screen
Clear glass screen quietly divides the shower from the compact bath.



03 Wood-Front Vanity
Warm wood fronts soften the vanity beneath the crisp basin.

“ Warmth is often a matter of what the eye can finally rest on.”

WHAT CHANGED

- 01 Walls—limewashed warm white
- 02 Furniture—lighter accent pieces
- 03 Textiles—woven cotton layers
- 04 Decor—edited spa essentials
- 05 Lighting—warmer sculptural fixtures
- 06 Storage—tidier open display



SECOND SCENARIO



Scandinavian—Pale Calm, Clean Lines

A quieter take in chalky whites, pale wood, black accents, and crisp cotton.

— curated in 40 seconds from a single photo.

CHOOSE A STYLE

- MEDITERRANEAN
- SCANDINAVIAN
- MINIMALIST
- JAPANDI
- CONTEMPORARY

THE FULL HOME ISSUE

roomzine.com



RENOVATION BUDGET

Sunwashed Mediterranean Bath Essentials

BATHROOM · MEDITERRANEAN

FURNITURE

① Teak bath stool Wayfair	\$60-\$140
② Woven storage basket Target	\$20-\$55

LIGHTING

⑤ Milk glass sconce West Elm	\$70-\$180
Ceramic ceiling lamp IKEA	\$60-\$160

TEXTILES

③ Striped hand towel West Elm	\$10-\$24
④ Flatweave bath rug Wayfair	\$30-\$90

DECOR

Terracotta soap set Target	\$18-\$45
Olive jar vase Wayfair	\$25-\$70

TOTAL

\$293-\$764

SHOPPING LIST · BATHROOM · MEDITERRANEAN

*Sunwashed Mediterranean Bath Essentials**Tagged in the photo, listed at right — what to buy and where.**Warm terracotta, teak, woven texture, and soft stripes create a relaxed coastal bath with dependable mid-range pieces from familiar US retailers.*



YOUR INTERIOR · REIMAGINED

NURSERY · SCANDINAVIAN

Soft Order for Small Beginnings

Calm is not empty— it is carefully held.

SCANDINAVIAN

BOHO



BEFORE



ROOM 04 / 07

NURSERY · SCANDINAVIAN

Soft Order for Small Beginnings

SCANDINAVIAN

BOHO

TRANSFORMATION · NURSERY

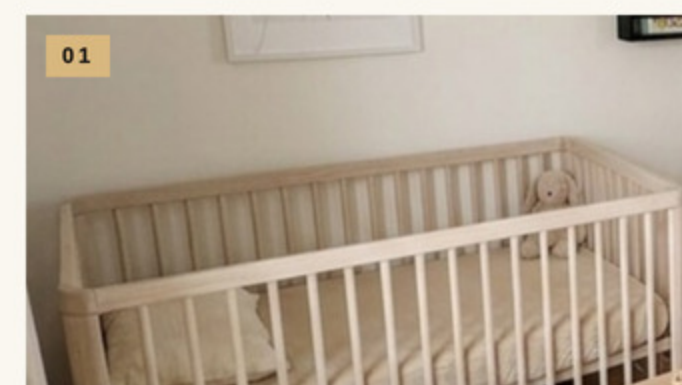
Soft Order for Small Beginnings

Blessed with warm flooring, a simple envelope, and generous daylight, the room already had the calm bones a nursery asks for. The proposal leans Scandinavian—powdered whites, pale wood, rounded forms, and tactile layers—to turn a mixed-use corner

into a restful, child-centered retreat. Freestanding pieces are simplified, storage becomes quieter, and the palette softens the room's sharper contrasts, resolving the space into something gentle, practical, and easy to grow with.

DETAILS THAT MATTER

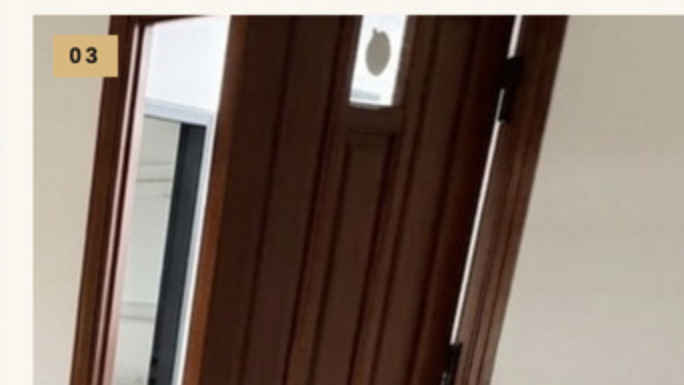
Three small decisions give the nursery its quiet Scandinavian ease.



01 Wooden Cot
A pale wooden bed softens the nursery with Scandinavian calm.



02 Low Desk
A slim low desk keeps toys and linens in quiet order.



03 Open Doorway
Dark wood door opens to a bright, white-walled room.

“Calm is not empty—it is carefully held.”

WHAT CHANGED

- 01 Walls in warm white
- 02 Furniture with pale wood
- 03 Textiles in soft layers
- 04 Lighting with rounded forms
- 05 Decor kept minimal
- 06 Storage with woven baskets



SECOND SCENARIO



Boho—warmer layers, freer rhythm

Earthier textiles, wicker accents, and playful pattern would give the nursery a more relaxed, sun-washed ease.

— curated in 40 seconds from a single photo.

CHOOSE A STYLE

SCANDINAVIAN

BOHO

MINIMALIST

CONTEMPORARY

JAPANDI

THE FULL HOME ISSUE

roomzine.com



RENOVATION BUDGET

Soft Nordic Nursery Essentials

NURSERY · SCANDINAVIAN

FURNITURE

① Ash spindle crib Wayfair / West Elm	\$350-\$700
② Low storage bench IKEA / Wayfair	\$180-\$400

LIGHTING

⑤ Paper globe pendant IKEA / Amazon	\$30-\$90
Oak wall sconce West Elm / Wayfair	\$80-\$220

TEXTILES

③ Wool blend rug West Elm / Wayfair	\$200-\$500
④ Linen blackout curtains Target / West Elm	\$70-\$180

DECOR

Braided storage baskets Target / IKEA	\$40-\$120
Framed animal prints Target / West Elm	\$50-\$160

TOTAL

\$1,000-\$2,370

SHOPPING LIST · NURSERY · SCANDINAVIAN

Soft Nordic Nursery Essentials

Tagged in the photo, listed at right — what to buy and where.



ENTRYWAY · BOHO

Sunlit Passage Softly Untangled

Ease begins at the threshold, not after it.

BOHO

MODERN CLASSIC

YOUR INTERIOR, REIMAGINED



BEFORE

TRANSFORMATION · ENTRYWAY

Sunlit Passage Softly Untangled

A generous shaft of daylight and a long, open run gave this entryway better bones than its makeshift storage suggested. The proposal leaned into that ease, warming the walls, replacing the temporary pieces with lighter furniture, and layering in

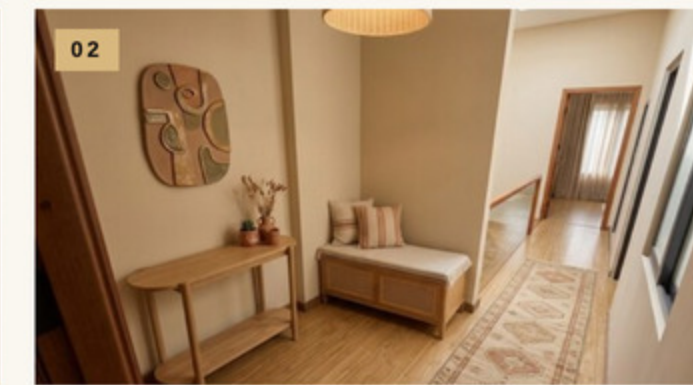
woven texture, softer lighting, and a grounded runner. The result resolves the corridor's in-between feeling with calm rhythm—practical enough for daily use, yet relaxed enough to feel like an arrival rather than a leftover space.

DETAILS THAT MATTER

Three existing elements, reimagined through a softer, more collected lens.



01 Sculpted Wardrobe
Curved panels give the wardrobe a soft, artful presence.



02 Patterned Runner
A pale runner softens the bamboo floor in the hall.

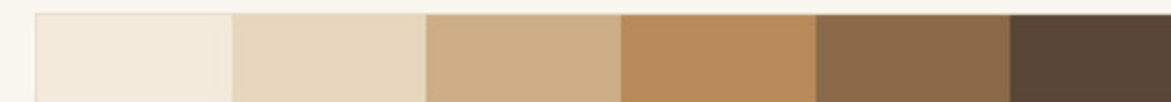


03 Skylight Glow
Soft daylight spills through the skylight—quietly lifting the beige hall.

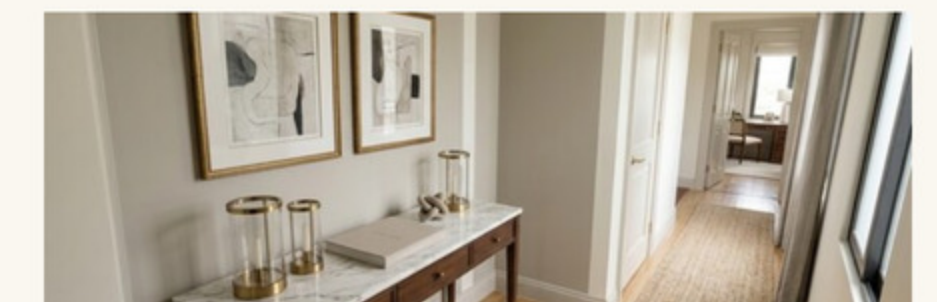
“Ease begins at the threshold,
not after it.”

WHAT CHANGED

- 01 Walls in warm limewash
- 02 Runner rug added
- 03 Wardrobe restyled in cane
- 04 Lighting with woven shades
- 05 Decor in handmade layers
- 06 Storage benches replace clutter



SECOND SCENARIO



Modern Classic—A Composed Arrival

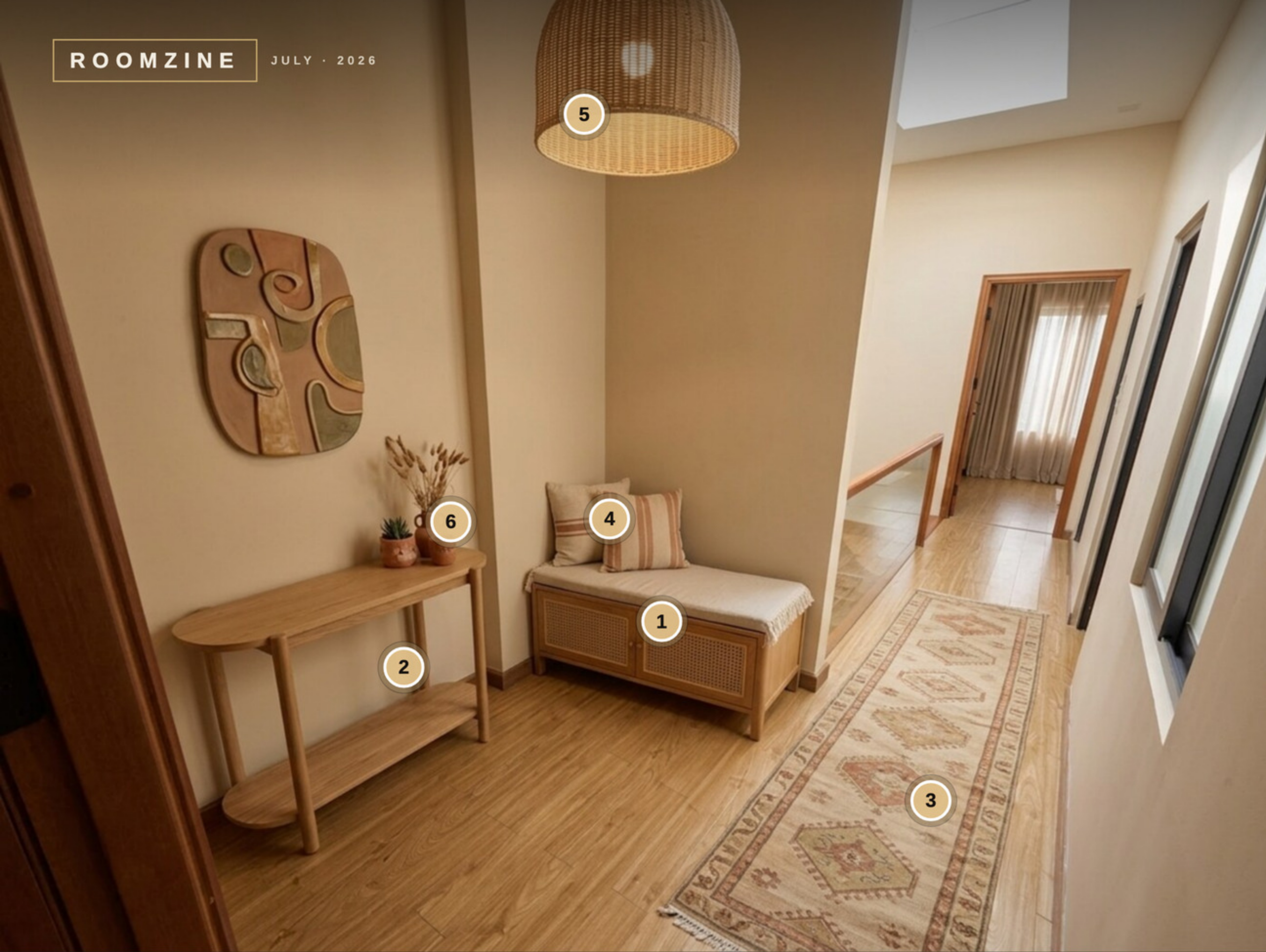
Tailored joinery, pale walls, and sculptural lighting bring order and quiet polish.

— curated in 40 seconds from a single photo.

CHOOSE A STYLE

- SCANDI
- BOHO**
- MODERN CLASSIC
- MINIMALIST
- INDUSTRIAL

Sunlit Passage Softly Untangled



RENOVATION BUDGET

Warm Boho Entryway Layers

ENTRYWAY · BOHO

FURNITURE

- ① Cane storage bench \$220-\$480
Wayfair / West Elm
- ② Slim console table \$140-\$320
Target / West Elm

LIGHTING

- ⑤ Woven pendant shade \$60-\$180
IKEA / West Elm
- Ceramic table lamp \$70-\$180
Target / West Elm

TEXTILES

- ③ Patterned runner rug \$70-\$220
Wayfair / Target
- ④ Linen cushion pair \$35-\$90
Amazon / West Elm

DECOR

- ⑥ Terracotta vase duo \$30-\$85
Target / Amazon
- Framed textile art \$90-\$260
Wayfair / West Elm

TOTAL

\$715-\$1,815

SHOPPING LIST · ENTRYWAY · BOHO

Warm Boho Entryway Layers

Tagged in the photo, listed at right — what to buy and where.



A medium-tier boho foyer mix that balances natural texture, artisan character, and approachable retail pricing.



PATIO · BIOPHILIC

A Courtyard In Full Leaf

Nature works best indoors when it is invited, not staged.

BIOPHILIC

MODERN TROPICAL

YOUR INTERIOR DESIGNER

TRANSFORMATION · PATIO

Where Shade Becomes Shelter Where Green Becomes Room

A covered patio already rich with planting and soft daylight had the right bones: generous height, deep shade, and an easy threshold to the house. The proposal leaned into those strengths, trading mismatched seating and visual clutter for calmer

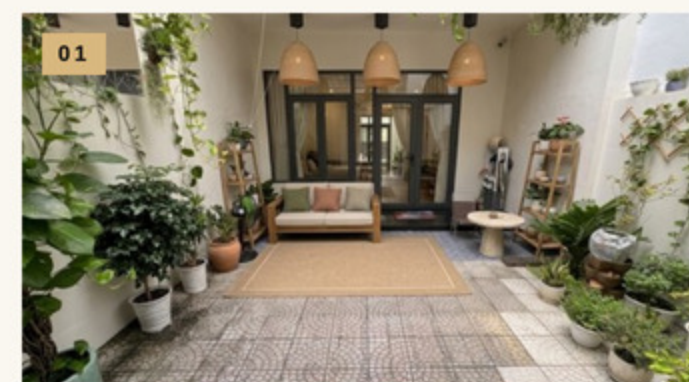
textures, lighter walls, and furniture with a grounded, natural presence. The result resolves the space as an outdoor living room—cooler in mood, more breathable in use, and more connected to the foliage that was there all along.



BEFORE

DETAILS THAT MATTER

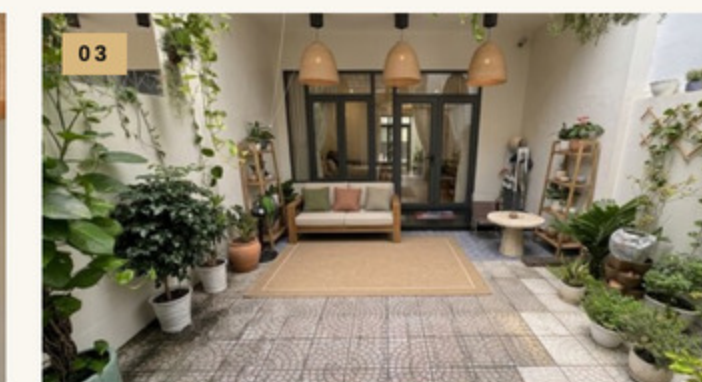
Three existing elements, reimagined through a calmer biophilic lens.



01 Hanging Greens
Trailing plants soften the terrace overhead — lush and airy.



02 Framed Glass Doors
Dark-framed glass doors open the terrace to a soft, shaded interior.



03 Patterned Floor
Mosaic tiles sketch a soft geometric path underfoot.

“Nature works best indoors when it is invited, not staged.”

WHAT CHANGED

- 01 Wall finish in warm limewash
- 02 Lounge seating in natural wood
- 03 Textiles in earthy neutrals
- 04 Lighting with woven shades
- 05 Decor in handmade ceramics
- 06 Clutter reduction throughout patio



SECOND SCENARIO



Modern Tropical—sunlit ease with sharper contrast

A crisper mix of dark frames, cane textures, and lush pattern brings resort energy.

— curated in 40 seconds from a single photo.

CHOOSE A STYLE

- MINIMALIST
- BIOPHILIC**
- WABI-SABI
- MODERN TROPICAL
- MEDITERRANEAN

PATIO · BIOPHILIC

A Courtyard In Full Leaf

BIOPHILIC

MODERN TROPICAL

RENOVATION BUDGET

Grounded Terrace, Living Texture

PATIO · BIOPHILIC

FURNITURE

- | | |
|---|-------------|
| ① Teak lounge chair
West Elm / Wayfair | \$450-\$999 |
| ② Round travertine side table
West Elm / Wayfair | \$180-\$399 |

LIGHTING

- | | |
|--|------------|
| ④ Woven pendant lantern
IKEA / West Elm | \$70-\$220 |
| Portable globe lamp
Target / Amazon | \$50-\$180 |

TEXTILES

- | | |
|--|------------|
| ③ Jute area rug
IKEA / Target | \$90-\$220 |
| Linen cushion set
Amazon / West Elm | \$60-\$180 |

DECOR

- | | |
|---|-------------|
| Terracotta planter pair
Target / Wayfair | \$70-\$180 |
| Ceramic stool planter
West Elm / Wayfair | \$120-\$280 |

TOTAL

\$1,090-\$2,658

SHOPPING LIST · PATIO · BIOPHILIC

*Grounded Terrace, Living Texture**Tagged in the photo, listed at right — what to buy and where.*



BALCONY · MODERN TROPICAL

Shade, Leaflight and Slow Air

Tropical style works best when the breeze does half the decorating.

MODERN TROPICAL

MEDITERRANEAN



BEFORE

ROOM 07 / 07

BALCONY · MODERN TROPICAL

Shade, Leaflight and Slow Air

MODERN TROPICAL

MEDITERRANEAN

TRANSFORMATION · BALCONY

Shade, Leaflight and Slow Air

A sheltered footprint, generous glazing, and lush existing planting gave this balcony a calm foundation from the start. The proposal leans into that softness with warmer wall color, lighter outdoor seating, breezier textiles, and woven accents that feel

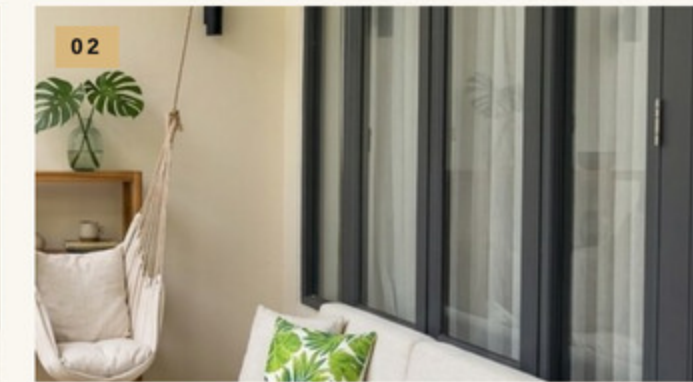
relaxed rather than themed. By replacing the darker, improvised pieces and editing the mix, the space resolves into an easy retreat—green, tactile, and quietly polished, while keeping the floor, ceiling, and built-ins exactly as they are.

DETAILS THAT MATTER

Three visible anchors, reimagined in a more composed outdoor language.



01 Suspended Comfort
A cushioned hanging chair softens the balcony with a laid-back sway.



02 Sheer Layers
Sheer curtains soften the dark-framed doors with a hushed glow.



03 Wooden Shelf
Open shelves frame ceramics in a warm, airy display.

“Tropical style works best when the breeze does half the decorating.”

WHAT CHANGED

- 01 Walls in warm ivory
- 02 Seating in natural textures
- 03 Textiles in leaf tones
- 04 Lighting with woven shades
- 05 Decor with terracotta accents
- 06 Clutter edited and simplified



SECOND SCENARIO



Mediterranean—sunwashed and mineral
Limewashed walls, blue accents, and simple wrought textures make the balcony feel cooler and more coastal.

— curated in 40 seconds from a single photo.

CHOOSE A STYLE

- SCANDINAVIAN
- MEDITERRANEAN
- MODERN TROPICAL
- MINIMALIST
- CONTEMPORARY

THE FULL HOME ISSUE
roomzine.com



RENOVATION BUDGET

Sun-Washed Tropical Balcony Retreat

BALCONY · MODERN TROPICAL

FURNITURE

Teak lounge chair West Elm / Wayfair	\$350-\$900
Rattan side table Target / West Elm	\$90-\$220

LIGHTING

Woven pendant shade IKEA / West Elm	\$70-\$180
Matte wall lantern Wayfair / Amazon	\$60-\$180

TEXTILES

Palm print cushion Amazon / Target	\$20-\$55
Natural jute rug IKEA / Wayfair	\$80-\$250

DECOR

Terracotta planter pair Target / Wayfair	\$50-\$140
Woven storage basket IKEA / Amazon	\$25-\$80

TOTAL

\$745-\$2,005

SHOPPING LIST · BALCONY · MODERN TROPICAL

Sun-Washed Tropical Balcony Retreat

Tagged in the photo, listed at right — what to buy and where.



Layer tactile natural materials and warm matte lighting for an airy, resort-like loggia that still feels practical for daily use.